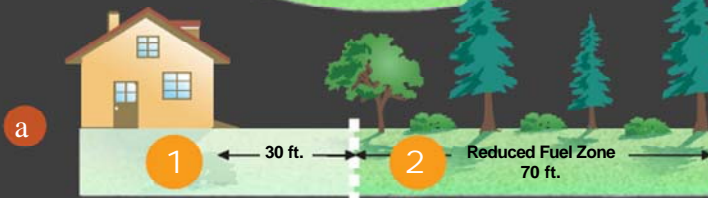
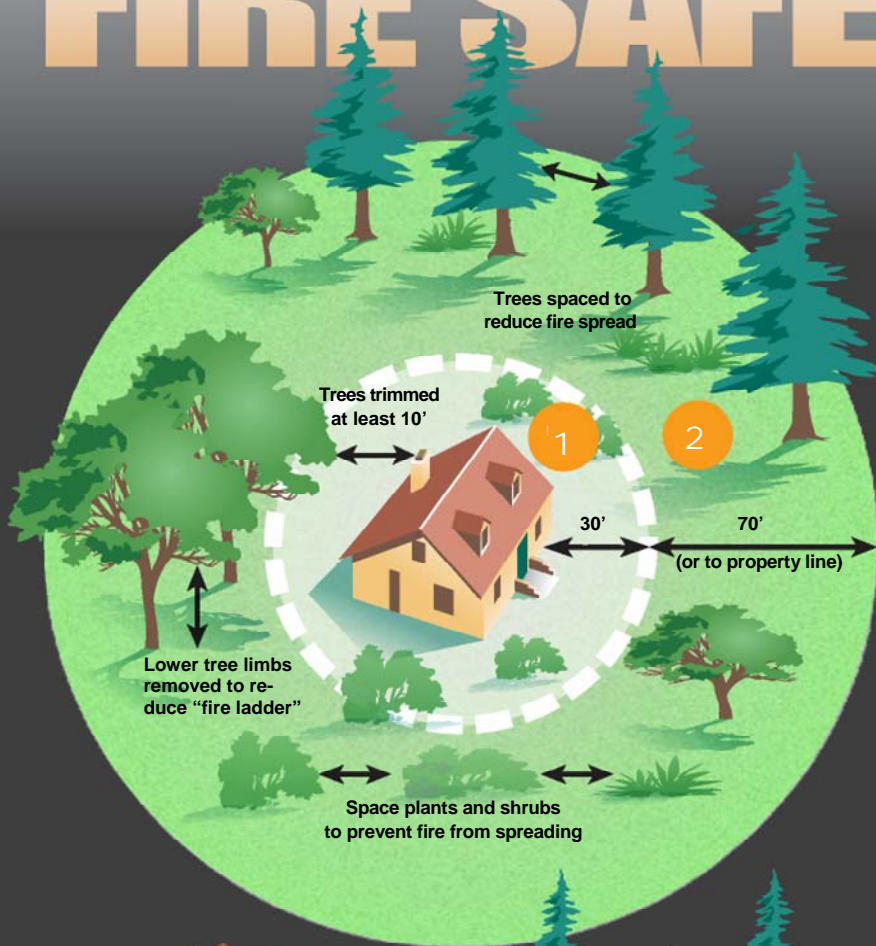
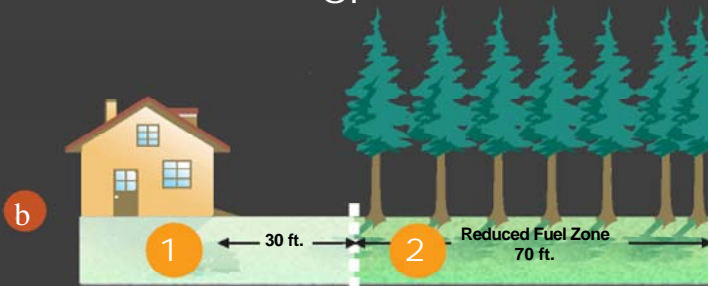


Make Your Home FIRE SAFE



or



100' DEFENSIBLE SPACE

Why 100 Feet?

Because following these simple steps can dramatically increase the chance of your home surviving a wildfire!

1 "Lean, Clean and Green Zone."

– Clearing an area of 30 feet immediately surrounding your home is critical. This area requires the greatest reduction in flammable vegetation.

2 "Reduced Fuel Zone."

– The fuel reduction zone in the remaining 70 feet (or to property line) will depend on the steepness of your property and the vegetation. Spacing between plants improves the chance of stopping a wildfire before it destroys your home. You have two options in this area:

- a Create horizontal and vertical spacing between plants. The amount of space will depend on the steepness of your property and vegetation.
- b Large trees do not have to be cut and removed as long as all the plants beneath them are removed. This eliminates a vertical "fire ladder."

When clearing vegetation, use care when operating equipment such as lawnmowers. One small spark may start a fire; a string trimmer is much safer.

Remove all build-up of needles and leaves from your roof and gutters. Keep tree limbs trimmed at least 10 feet from any chimneys and remove dead limbs that hang over your home or garage.



Eastside Fire & Rescue
175 Newport Way NW
Issaquah, WA 98027
(425) 313-3200